



WILCO

Welfare Innovations
at the Local level
in favour of Cohesion

Meeting 1

Nijmegen

December 17-18, 2010

Introduction

- ☐ Welcome
- ☐ Introductions: who are we?
- ☐ Overview of agenda

Agenda day 1

- ④ Welcome and introductions
- ④ Overview of the project
- ④ Discussion of upcoming research
- ④ Official opening of the project
- ④ Discussion of upcoming research (again)

Agenda day 2

- ⌘ Administrative and financial issues
- ⌘ Dissemination and outputs
- ⌘ Wrap-up

Project overview

- ④ History
- ④ Timeline
- ④ Management structure
- ④ Communication

WILCO step by step (1)

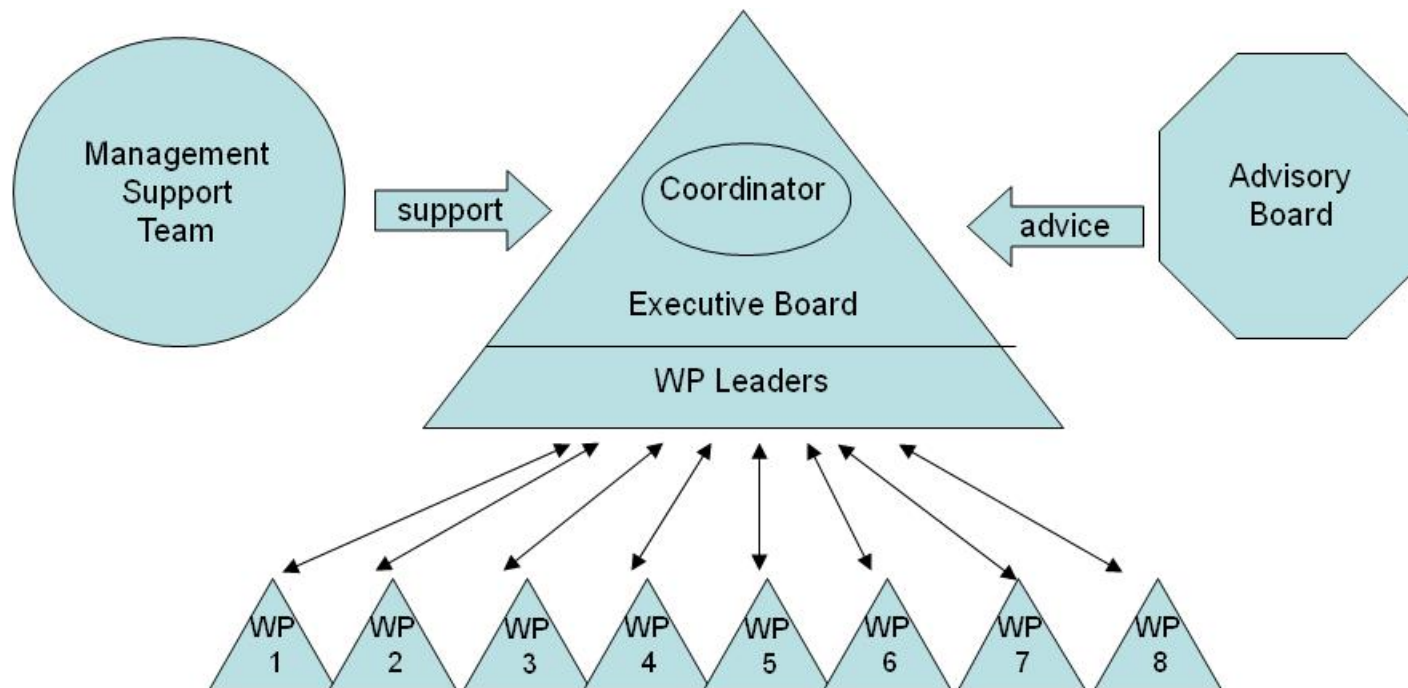
WP No	Work package title	month	
		start	end
1	Scientific management	December 2010	November 2013
2	Local welfare from a historical-institutional perspective	December 2010	May 2011
3	Measures of social cohesion	May 2011	March 2012
4	Urban policy innovations in local welfare: core ideas	March 2012	February 2013
5	Instruments and approaches in local welfares systems: innovation, adoption and adaptation	February 2013	August 2013
6	Overview and reflection	August 2013	November 2013
7	Dissemination	December 2010	November 2013
8	Non-Scientific Management	December 2013	November 2013

WILCO step by step (2)

no.	Deliverable name	WP no.	Delivery date (month)
1	Start of project	1	December 2010
8.1	Setup of management structures / procedures	8	December 2010
7.1	Website and Internet presence	7	December 2010
7.2	A dissemination strategy	7	December 2010
7.3	A visual and content uniformity protocol	7	December 2010
2.1	Multi-adaptor methodological tool	2	February 2011
2.2	Country reports: the historical context of local welfare	2	April 2011
8.2	Setup of internal website (incl. tools)	8	May 2011
2.3	Comparative report	2	May 2011
8.4	Mini-progress reports	8	May 2011
7.4	EMES Working Papers	7	November 2011
3.1	Social cohesion reports	3	February 2012
3.2	Missing data report	3	April 2012
3.3	Comparative report	3	April 2012
7.5	Scientific mid-term workshop	7	May 2012
7.6	EC policy workshop	7	May 2012

7.7	Various project summaries including two European Policy Briefs	7	May 2012
4.1	City reports: framing local welfare	4	November 2012
7.8	Edited volume	7	November 2012
7.9	Mid-term dissemination strategy evaluation	7	November 2012
7.4	EMES Working Papers	7	November 2012
4.2	Comparative report	4	January 2013
8.4	Mini-progress reports	8	June 2013
5.1	City reports: approaches and instruments	5	June 2013
7.11	Training modules for various audiences	7	June 2013
5.2	Comparative report	5	August 2013
6.1	Final Report	6	November 2013
6.2	Evaluation Report	6	November 2013
7.4	EMES Working Papers	7	November 2013
7.12	Closing conference	7	November 2013
7.13	Edited volume on approaches and instruments	7	November 2013

Management structure



Roles

- ③ Role of Coordinator: To manage the overall scientific process
- ③ Role of Executive Board: To keep an overview of strategic progress
- ③ Role of WP leaders: To prepare discussions on WP + take lead in comparative reporting
- ③ Management Support Team: To offer support on all non-scientific issues

- ③ Questions?
- ③ Agreed?

Communication

- ④ Meetings: for discussion, not presentation
- ④ Shared internal workspace
- ④ Questions on scientific issues ⇒ General Assembly / Taco
- ④ Questions on non-scientific issues ⇒ Oliver

WP 2: Local welfare systems from a historical-institutional Perspective

Aims:

- ③ To chart the context of local welfare systems from a historical-institutional perspective.
- ③ To make an inventory of the key formal pre-conditions of local welfare systems in each of the countries.
- ③ To develop a methodological tool for comparing *the local*, taking the diversity of the systems into account.

Defining ‘the local’

Dimensions:

1. Structure of the welfare state
 - The multi-level institutional setting of the welfare system
 - Welfare responsibilities/tasks at local level
2. Degree of centralisation
 - Levels of regulation/authority/financing of different welfare fields
 - Degree of autonomy

Framing local governance

Aim: an inventory of formal pre-conditions for local welfare policies and initiatives (last 10 years)

Searching for key dimensions for the comparison of the fields of interest: housing, child care, unemployment

Preconditions ?

- ④ Distribution of responsibility
 - regulation
 - financing
 - production
 - among local actors e.g. (state/market/
third sector)
- ④ Institutionalised mechanisms that promote/restrain innovation?

Methods

- ④ Literature review
- ④ Expert interviews: two in each of the three policy fields, with public officials and professionals

Opening ceremony

- ④ Anna van der Vleuten, Vice-Dean,
Nijmegen School of Management
- ④ Bas Kortmann, Rector Magnificus,
Radboud University Nijmegen
- ④ Pia Laurila, Project Officer,
European Commission
- ④ Taco Brandsen, Coordinator

Practical information

- 📌 Pick-up at hotel lobby at 19.00
- 📌 Tomorrow start of meeting at 9.30

Agenda day 2

- ⌘ Administrative and financial issues
- ⌘ Dissemination and outputs
- ⌘ Wrap-up

Wrap-up

- ④ Outstanding issues
- ④ Homework
- ④ Next meeting
- ④ Close of meeting